



Michleham Down, Woodside Park, N12 7JJ
Guide Price £1,350,000 Freehold Council Tax Band G

REAL ESTATES
Est.1981

Estate Agents · Residential Sales · Investments · Lettings

Real Estates are delighted to present this immaculate FOUR BEDROOM SEMI-DETACHED family home set on a premier street in the heart of Woodside Park, offering stunning GREENBELT VIEWS and a SOUTH FACING GARDEN.

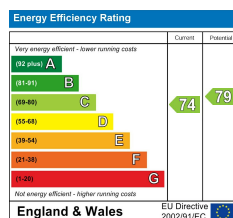
This house has been extended and renovated to the highest standard throughout. The ground floor accommodation comprises a spacious entrance hallway with storage, leading into the separate front reception room with wide bay window. The back of the property provides the open plan kitchen, dining and living space, with bifold doors opening onto the decking area. The Hacker kitchen features a mixture of Miele and Siemens appliances as well as a Quooker hot tap. There is a utility room and guest WC to complete the accommodation.

The first floor houses two large double bedrooms with Neatsmith fitted wardrobes, a single bedroom and the modern main bathroom, whilst the loft has been converted into a principal bedroom with dressing area and luxurious en-suite, as well as panoramic views of the Darlands Nature Reserve.

Externally, the over 70 foot rear garden has direct access onto the paved pathways of Folly Brook, whilst the front driveway provides off street parking for at least two cars.

Michleham Down is a quiet residential crescent walkable to Woodside Park Underground Station on the Northern Line, plus the popular coffee shops on Sussex Ring.

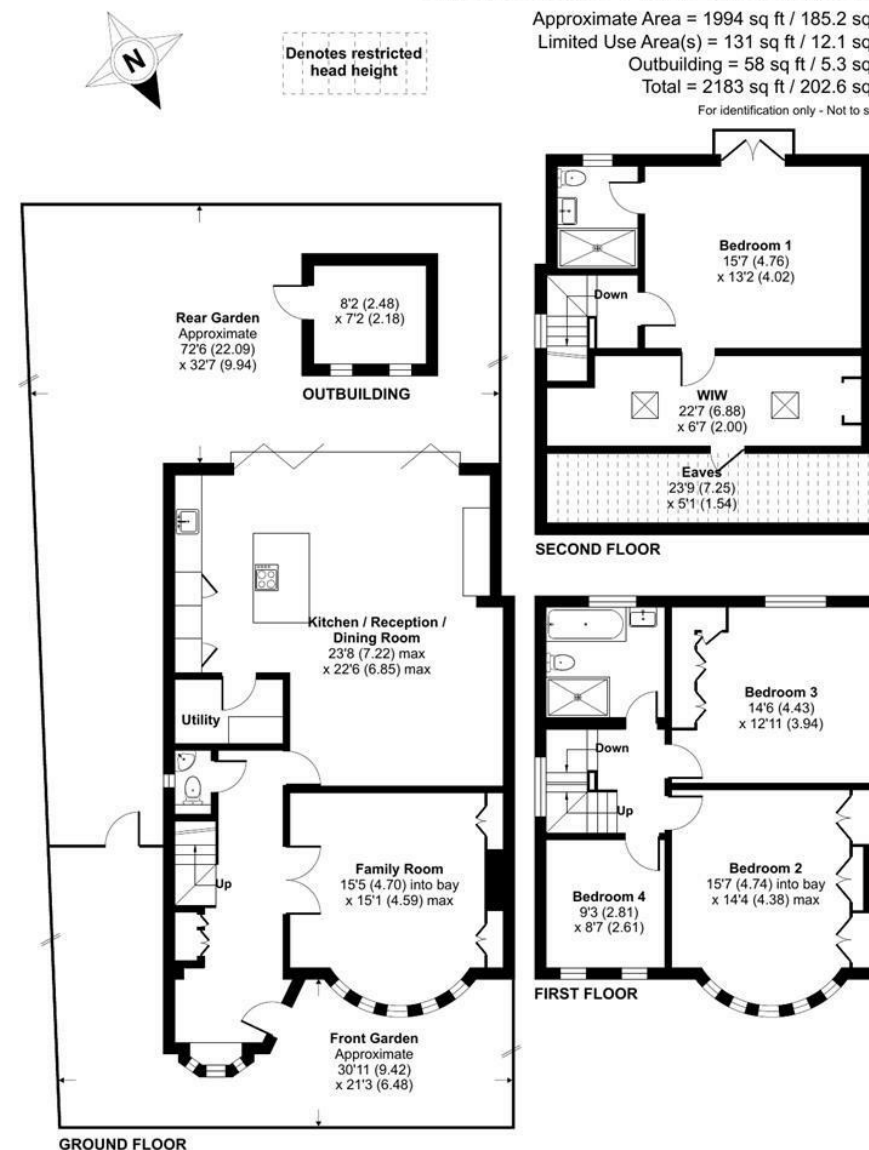
NB. The vendor of this property is a partner of Real Estates.



Michleham Down, London, N12

Approximate Area = 1994 sq ft / 185.2 sq m
 Limited Use Area(s) = 131 sq ft / 12.1 sq m
 Outbuilding = 58 sq ft / 5.3 sq m
 Total = 2183 sq ft / 202.6 sq m

For identification only - Not to scale



Floor plan produced in accordance with RICS Property Measurement 2nd Edition, Incorporating International Property Measurement Standards (IPMS2 Residential). © richcom 2025. Produced for Real Estates. REF: 1359190